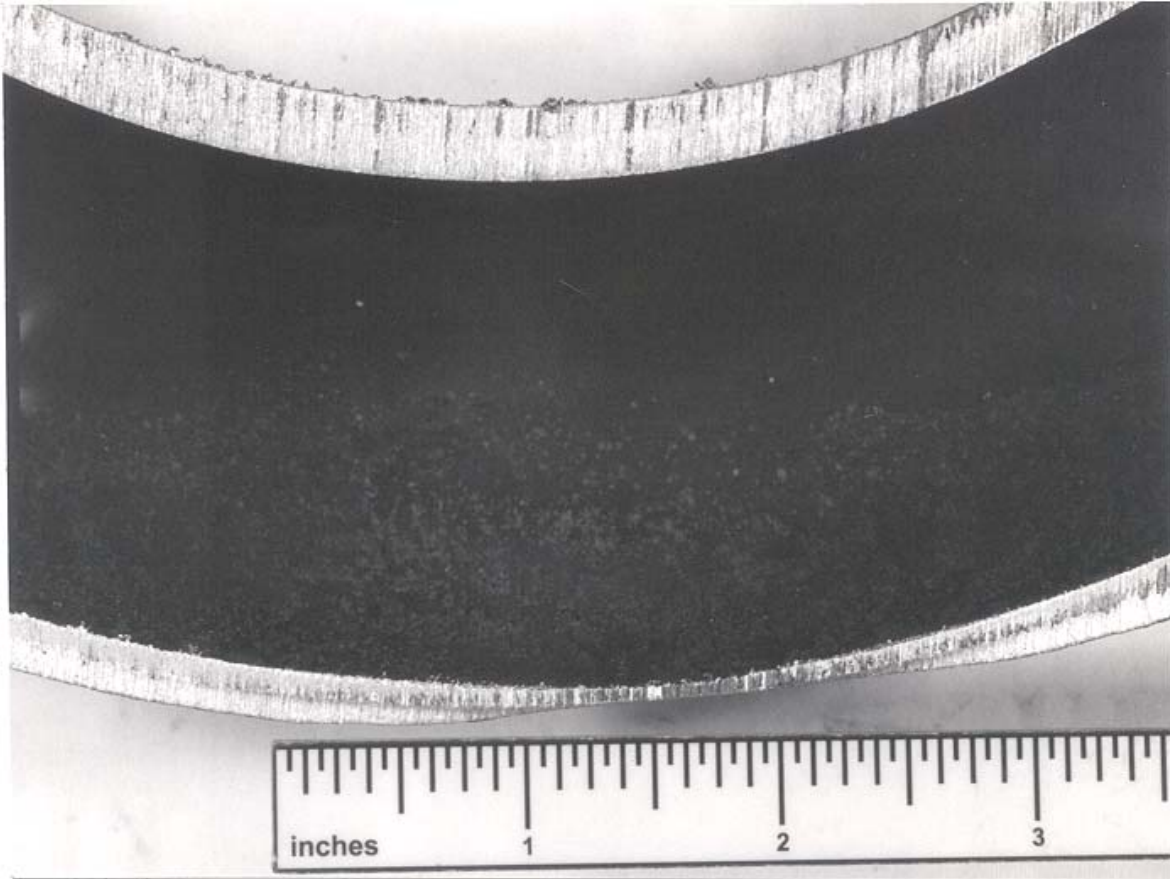


# M&M Engineering's Boiler Tube Failure Handbook



## Deformation—Thinning



Locations	Waterwall, Superheater
Boiler Type	Recovery
Industry	Pulp and Paper

Appearance	Metal thinning on fireside
Mechanism	Smelt/Slag Attack
Comment	Molten ash (Slag in a power boiler, smelt in a recovery boiler) can be corrosive to the boiler tube.

