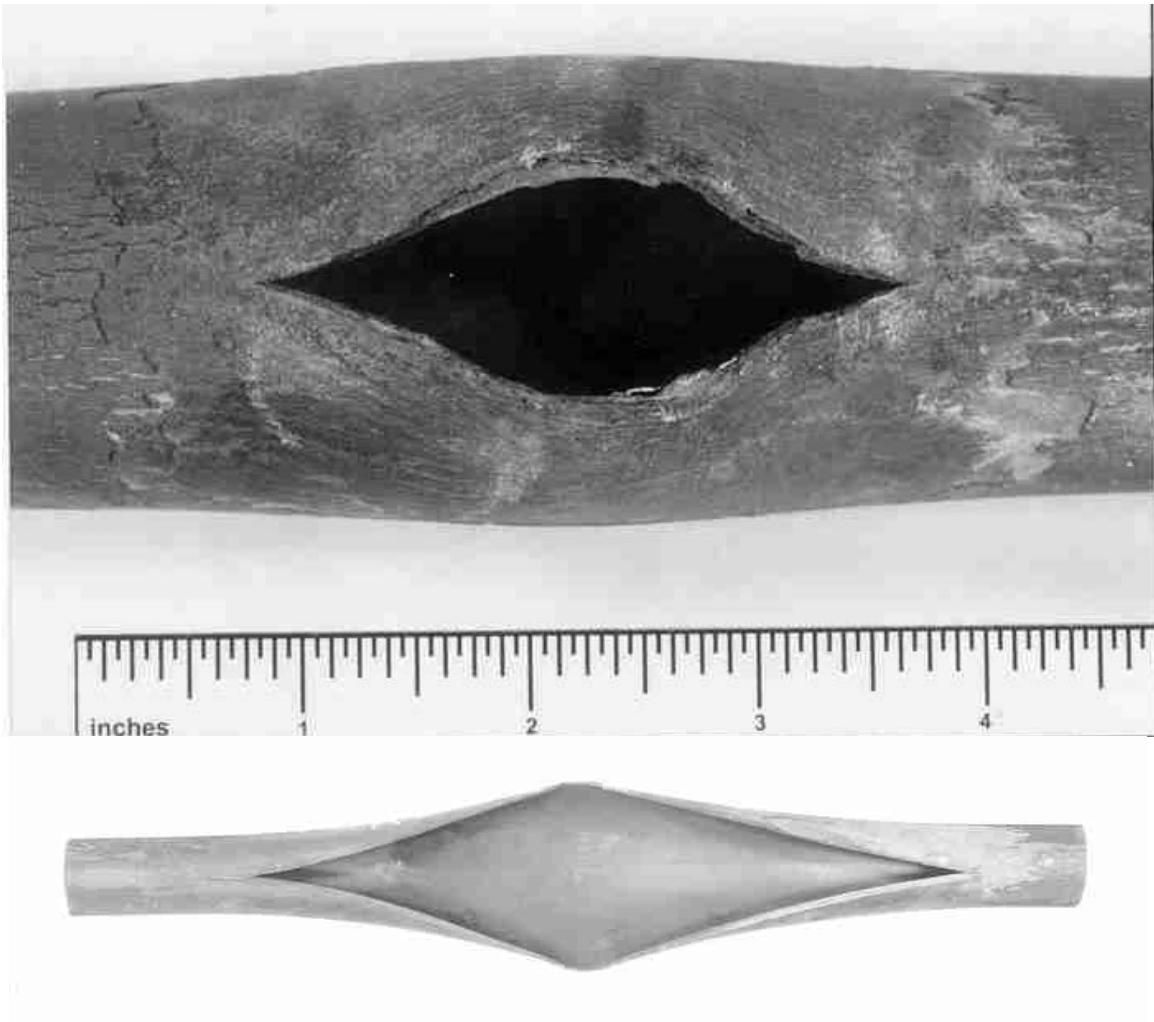


M&M Engineering's Boiler Tube Failure Handbook



Crack—not in or near a weld—Longitudinal



Locations	Superheater, Reheater
Boiler Type	Power
Industry	Electric Utility

Appearance	Fish-mouth rupture
Mechanism	Short-term Overheat
Comment	Caused when steam flow is blocked or severely restricted. Lack of cooling leads to tensile rupture of tube.

