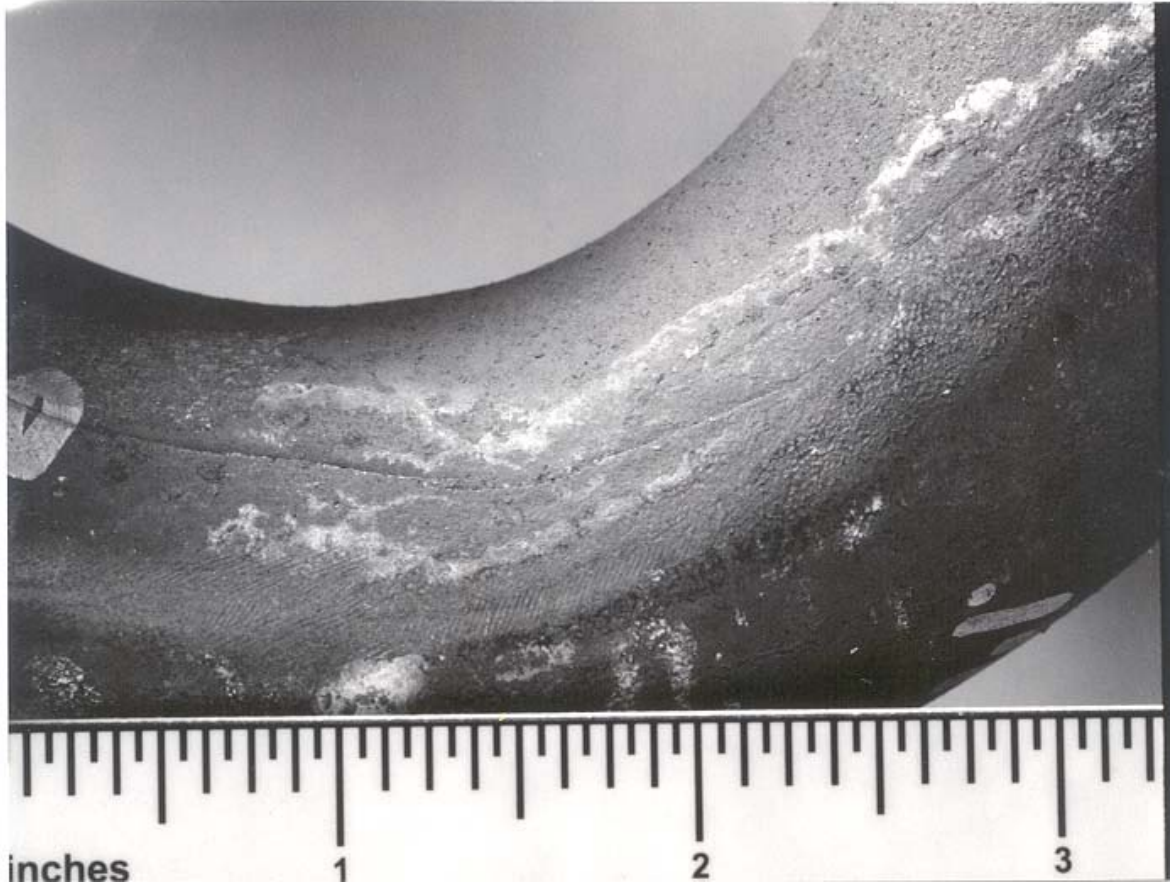


M&M Engineering's Boiler Tube Failure Handbook



Crack—Not in or near a weld—Longitudinal



Locations	Superheater
Boiler Type	Industrial
Industry	Process/Heat

Appearance	Multiple tight fine cracks
Mechanism	Stress Corrosion Cracking
Comments	Residual stresses from tube forming combined with caustic from the environment to cause the cracking.

