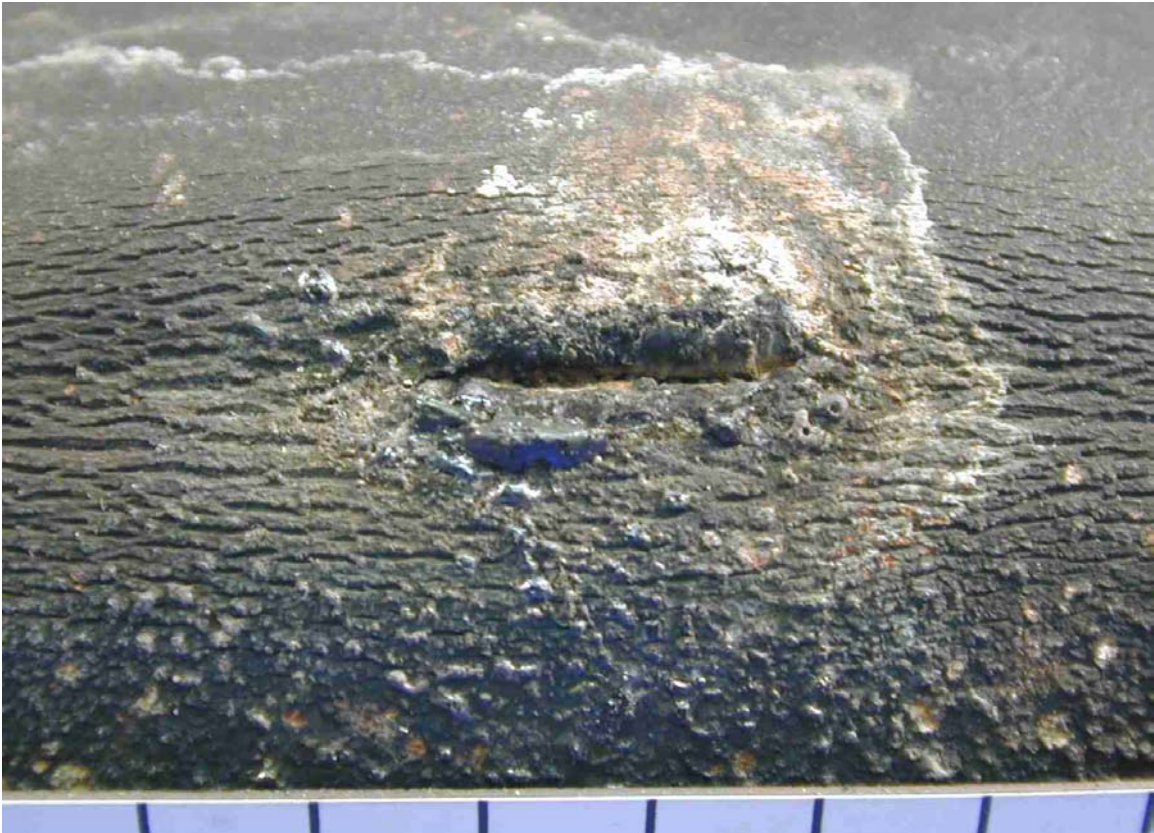


# M&M Engineering's Boiler Tube Failure Handbook



Crack—Not in or near a weld—Longitudinal



Locations	Superheater, Reheater
Boiler Type	Power
Industry	Electric Utility

Appearance	Short longitudinal cracks with numerous parallel cracks
Mechanism	Long Term Overheat/ Creep
Comment	Caused when steam flow is blocked or partially restricted or when the heating capacity of the tube exceeds the capacity of the cooling media.

