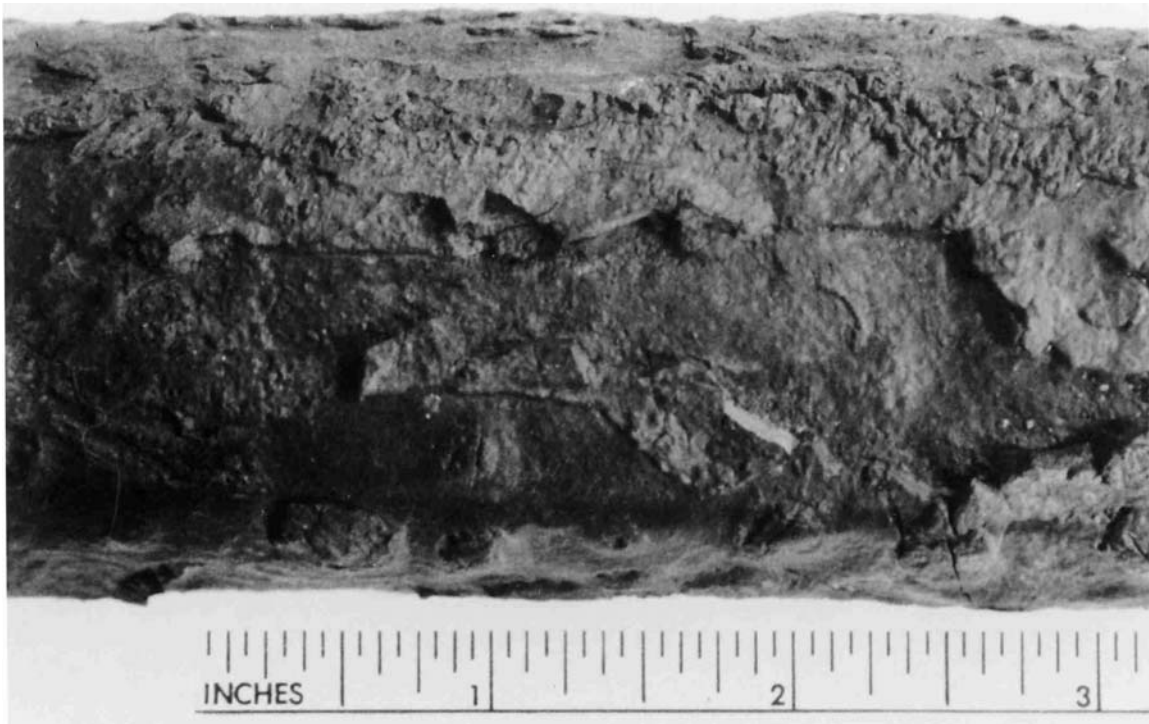


# M&M Engineering's Boiler Tube Failure Handbook



## Deformation—Thinning



Locations	Waterwall, Superheater
Boiler Type	Power
Industry	Common

Appearance	External Wastage Beneath Adherent Slag Deposit
Mechanism	Corrosion from Slag Attack
Comment	Molten ash creates corrosive sulfur species. Alkalisulfates are formed where metal temperatures are greater than 1000°F and pyrosulfates where temperatures are greater than 700°F.

