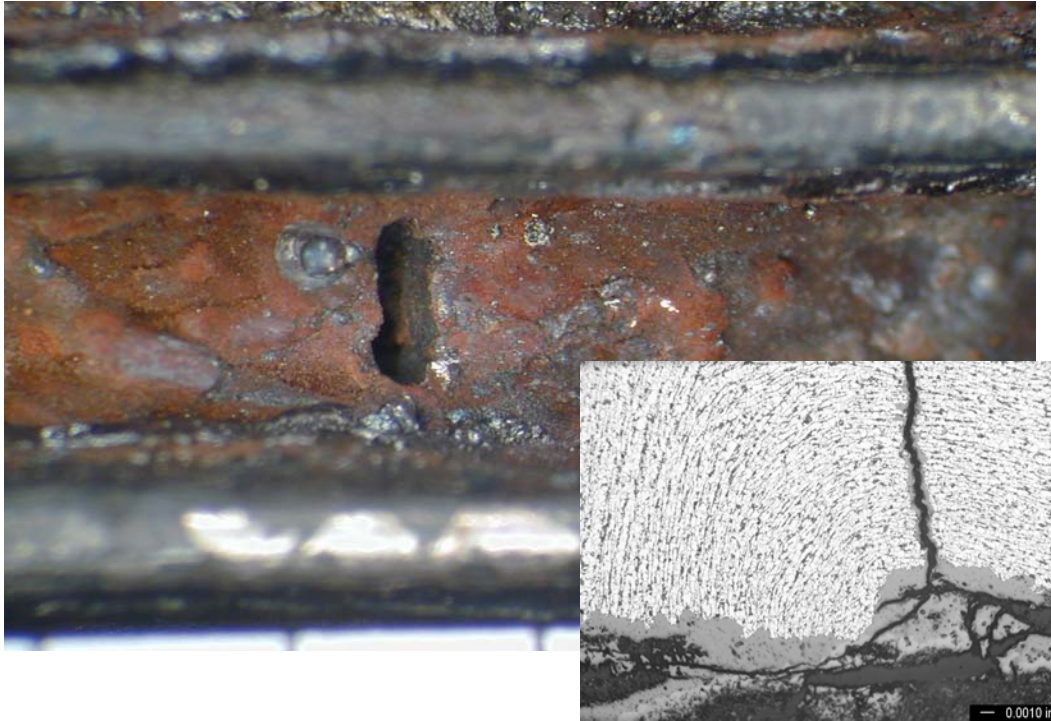


M&M Engineering's Boiler Tube Failure Handbook



Hole—Waterside



Locations	Economizer
Boiler Type	HRSG
Industry	Electric Utility

Appearance	Sharply defined hole
Mechanism	Corrosion Fatigue
Comments	Corrosion Fatigue typically causes cracking. In this case the cracks formed an oval section of the tube wall that was ejected from the tube to create the failure.

