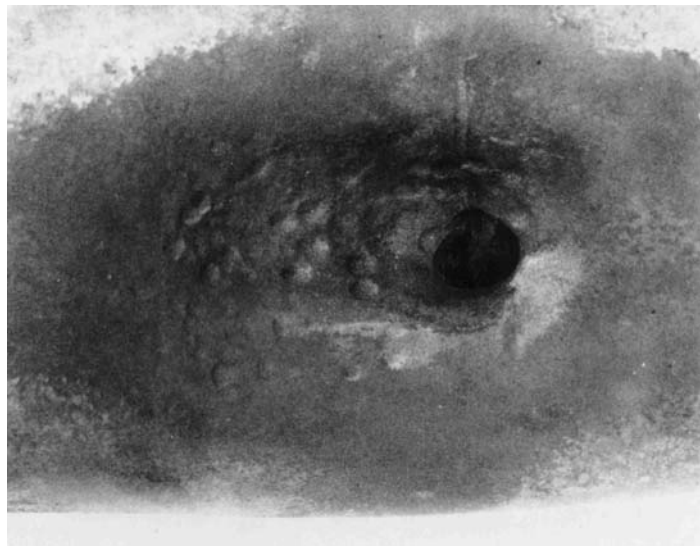
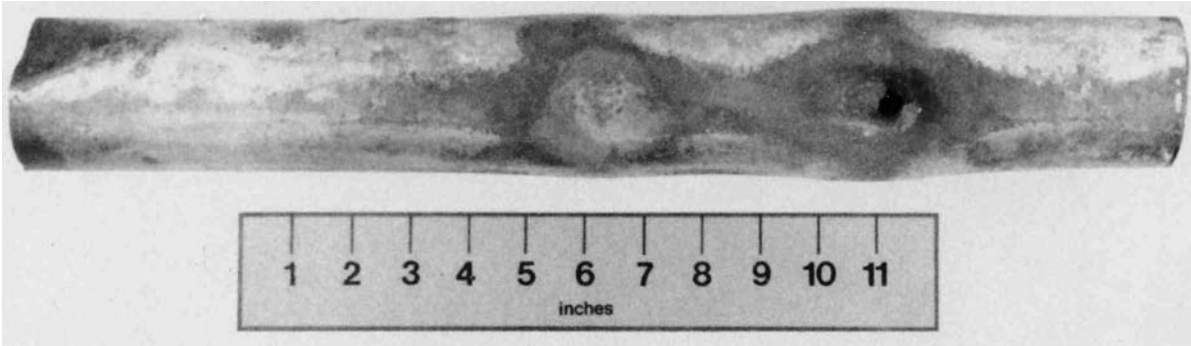


# M&M Engineering's Boiler Tube Failure Handbook



## Hole—Fireside



Locations	Reheater
Boiler Type	Power
Industry	Utility

Appearance	Deformation and perforation from the outside in
Mechanism	Mechanical damage
Comments	Damage caused by shotgun slug used to deslag reheater tubes. Similar failure can occur wherever mechanical deslagging is performed.

